

ECONOMIC INDICATORS

NEW SOUTH WALES

EMBARGO: 11:30AM (CANBERRA TIME) MON 14 SEPTEMBER 1998

C O N T E N T S

	<i>page</i>
Notes	2
NSW Overview	3
Main features	4
List of tables and graphs	5
 Financial year data, various sectors	 6
Labour	7
Production	10
Building	11
Retail trade	12
New motor vehicle registrations	13
Tourism	14
Consumer and producer price indexes	15
Finance	16
State Government finance	17
Investment	18
Foreign trade	19

- For more information about these and related statistics, contact Bill Markham on (02) 9268 4376 or e-mail bill.markham@abs.gov.au or refer to the back cover of this publication.

NOTES

GENERAL

This publication provides information on a wide range of economic indicators which are the latest available at the time of publication. In a number of cases, figures appearing in this summary are preliminary and are subject to revision in subsequent issues.

CHANGES IN THIS ISSUE

For table 1, data for the Estimated Resident Population has been replaced for this issue only by data showing the latest financial year information for various sectors of the economy. Also shown with the latest financial year data is the proportion of each sector to the Australian totals for each sector.

SEASONAL ADJUSTMENT AND TREND ESTIMATION

Seasonal adjustment is a means of removing the estimated effects of normal seasonal variation from a series so that the effects of other variations on that series can be more clearly recognised. Seasonal adjustment does not aim to remove the irregular or non-seasonal influences which may be present. This means that movements of seasonally adjusted estimates may not be reliable indicators of trend behaviour. Smoothing seasonally adjusted series produces a measure of the underlying trend by reducing the impact of the irregular component of the series. This smoothing technique does result in revisions to the most recent estimates as additional observations become available. For an explanation of seasonal adjustment derivation, refer to the publication *Seasonally Adjusted Indicators* (Cat. no. 1308.0).

STANDARD ERRORS OF ESTIMATES

One measure of the variability which occurs as a result of surveying only samples of the total business population is the standard error. There are about two chances in three that a survey estimate is within one standard error of the figure that would have been obtained if all businesses had been included, and about 19 chances in 20 that it is within two standard errors. The standard error can also be expressed as a percentage of the estimate and this is known as the relative standard error (RSE). For detailed explanatory notes and definitions for the items shown in this publication, readers are referred to the specific ABS publications.

Current publications produced by the ABS are listed in the *Catalogue of Publications* (Cat. no. 1101.0). A *Release Advice* (Cat. no. 1105.0) is issued on Tuesdays and Fridays which lists publications to be released in the next few days. These publications are available from any ABS office.

SYMBOLS AND OTHER USAGES

kWh	kilowatt hour
teraJ	terajoule
n.a.	not available
n.p.	not available for publication but included in totals where applicable
n.y.a	not yet available
r	figure or series revised since previous issue
. .	not applicable
—	nil or rounded to zero
—	break in continuity of series (where a line is drawn across a column between two consecutive figures)

Gregory W. Bray
Regional Director
New South Wales

NSW OVERVIEW

.....

EMPLOYMENT

The number of employed persons in NSW was 2,886,700 in seasonally adjusted terms in July 1998, a rise of 0.8% on the previous month. National employment rose slightly in July.

UNEMPLOYMENT

Unemployment in NSW fell by 0.6% in July 1998 to a seasonally adjusted figure of 232,900. The unemployment rate decreased by 1.3% on the previous month to 7.5%. The national unemployment rate rose slightly to 8.3%.

AVERAGE WEEKLY EARNINGS

In seasonally adjusted terms, average weekly employee earnings (full time adult ordinary time) for NSW in May 1998 were \$747.20. This was slightly up on the figure for February 1998 and represented an increase of 3.4% on May 1997.

BUILDING APPROVALS

The seasonally adjusted number of new dwelling units approved for NSW in June 1998 increased by 29.8% from the previous month to 5,357.

RETAIL

In seasonally adjusted terms, total retail sales for NSW in June 1998 was \$3,946.5 million, a decrease of 1.0% compared to the previous month.

NEW MOTOR VEHICLE REGISTRATIONS

In seasonally adjusted terms, new motor vehicle registrations for NSW in June 1998 rose by 9.6% from the previous month to 24,020.

FINANCE

The value of housing finance commitments for owner occupation in NSW in June 1998 was \$2,073 million. This represented an 11.5% increase from May 1998 and an 17.5% increase from June 1997.

MAIN FEATURES

.....

FINANCE

The seasonally adjusted estimate for the value of housing finance commitments in NSW was \$1,999 million in June 1998, a rise of 14.1% from May 1998. The figure increased by 15.1% over the previous year from June 1997.

In original terms, there was an increase in all components of housing finance for NSW, compared to the previous month. The value of finance approved for the construction of dwellings rose 21.3% to \$262 million, the purchase of newly erected dwellings was up 23.7% to \$114 million, commitments for the purchase of established dwellings increased 9.6% to \$1,354 million and the refinancing of existing dwellings was up 15.1% to \$343 million. Compared to the housing finance figures a year ago, all components rose, except for newly erected dwellings, which fell 5.0%.

The average borrowing size in NSW in June 1998 was \$145,700. This was up by 9.3% from the average of \$133,300 twelve months earlier.

Nationally, the seasonally adjusted value of lending commitments rose by 12.8% to \$4,997 million in June 1998 and was 14.2% higher than in June 1997.

NEW MOTOR VEHICLE REGISTRATIONS

In seasonally adjusted terms, the number of new motor vehicle registrations for NSW in June 1998 was 24,020, an increase of 9.6% on the previous month and an increase of 16.0% on June 1997.

The national figure was 75,163, representing increases of 16.9% and 26.5% respectively over the same periods. The NSW and national figures for June 1998 are the highest ever recorded and may be attributed to sales promotions and end of financial year discounting.

The seasonally adjusted figure for new passenger vehicle registrations for NSW in June 1998 was 20,817, an increase of 11.7% on the previous month and an increase of 15.8% on the previous year. The national figure was 64,081, representing increases of 17.9% and 27.9% respectively over the same periods.

The figure for new registrations of other vehicles (excluding motor cycles) for NSW in June 1998 was 3,203, a fall of 2.4% on the previous month but a rise of 17.4% on June 1997. Nationally, there were increases of 11.5% and 18.9% respectively over the same periods.

LIST OF TABLES AND GRAPHS

Page

FINANCIAL YEAR DATA

- 1** Financial year data, various sectors, NSW and Australia 6

LABOUR

- 2** Labour data, latest time period, NSW and Australia 7
3 Labour data, time series, NSW 7
4 Labour force status of the civilian population, NSW 8
5 Graph: Unemployment rates, NSW and Australia 9

PRODUCTION

- 6** Coal, electricity and gas production, latest time period, NSW and Australia . . 10
7 Coal, electricity and gas production, time series, NSW 10

BUILDING

- 8** Building approvals, latest time period, NSW and Australia 11
9 Building approvals, time series, NSW 11

RETAIL TRADE

- 10** Turnover of retail establishments, latest time period, NSW and Australia . . . 12
11 Turnover of retail establishments, time series, NSW 12

NEW MOTOR VEHICLE REGISTRATIONS

- 12** New motor vehicle registrations, latest time period, NSW and Australia 13
13 New motor vehicle registrations, time series, NSW 13

TOURISM

- 14** Accommodation Establishments, latest time period, NSW and Australia. 14
15 Accommodation Establishments, time series, Sydney and NSW. 14
16 Graph: Hotels, motels etc., monthly room occupancy rates,
 Sydney Tourism Region and NSW. 14

CONSUMER AND PRODUCER PRICE INDEXES

- 17** Consumer and producer price indexes, latest time period,
 NSW and Australia 15
18 Consumer and producer price indexes, time series, NSW 15
19 Graph: Consumer Price Index, Sydney and average of 8 capital cities 15

HOUSING FINANCE

- 20** Finance commitments, latest time period, NSW and Australia 16
21 Finance commitments, time series, NSW 16

STATE GOVERNMENT FINANCE

- 22** Government finance, budget sector, time series, NSW 17

INVESTMENT

- 23** Actual private new fixed capital expenditure, latest time period,
 NSW and Australia 18
24 Actual private new fixed capital expenditure, time series, NSW. 18
25 Graph: Actual private new fixed capital expenditure, NSW. 18

FOREIGN TRADE

- 26** Imports and exports, latest time period, NSW and Australia 19
27 Imports and exports, time series, NSW 19

<i>Indicator</i>	<i>Unit</i>	<i>Period</i>	<i>Latest figure for New South Wales</i>	<i>Proportion of Australian total %</i>
Population				
Estimated resident population (at end December)	'000	1997	6 306	33.8
National accounts				
Gross State Product.	\$m	1996-97	181 799	35.2
State final demand	\$m	1996-97	176 297	34.5
Overseas trade				
Overseas imports into NSW	\$m	1997-98	38 442	42.4
Total overseas exports	\$m	1997-98	19 695	23.6
Production				
Value of agricultural commodities produced	\$m	1995-96	7 040	25.7
Mining operations — turnover	\$m	1996-97	5 232	16.1
Manufacturing Industry — turnover	\$m	1996-97	68 818	32.8
Electricity operations — turnover	\$m	1996-97	7 006	34.4
Tourist accommodation — takings	\$m	1996-97	1 291	35.7
Building approvals	\$m	1997-98	13 287	39.1
Building commencements	\$m	1996-97	10 689	38.0
Engineering construction — value of work done	\$m	1996-97	5 010	33.1
Consumption and investment				
New motor vehicle registrations	No.	1997-98	259 107	33.6
Private new capital expenditure	\$m	1996-97	13 663	31.2
Retail Turnover	\$m	1997-98	47 544	35.3
Wholesale Sales	\$m	1991-92	53 199	39.2
Finance				
Housing finance commitments	\$m	1997-98	21 839	40.0
Selected service industries				
Income of real estate industry	\$m	1995-96	1 192	35.4
Income of motion picture exhibition industry	\$m	1996-97	343	41.2
Information technology				
Income of Information Technology and Telecommunication Specialists	\$m	1995-96	21 261	43.5
Research and development				
Gross expenditure on Research and development	\$m	1994-95	2 312	31.6

2

LABOUR, NSW AND AUSTRALIA

Indicator	Unit	Latest period	Latest figure	New South Wales		Australia		
				Change from prior period	Change from same period prior year	Latest figure	Change from prior period	Change from same period prior year
Employed persons (seasonally adjusted)	'000	July 98	2 886.7	0.8	2.9	8 598.0	0.1	2.2
Unemployed persons (seasonally adjusted)	'000	July 98	232.9	-0.6	8.8	777.0	1.2	-2.9
Labour force (seasonally adjusted)	'000	July 98	3 119.6	-0.7	1.9	9 375.1	0.2	1.7
Participation rate (seasonally adjusted)	%	July 98	62.4	0.5	0.6	63.5	0.2	0.5
Unemployment rate (seasonally adjusted)	%	July 98	7.5	-1.3	-9.6	8.3	1.2	-4.6
Industrial disputes—working days lost	'000	May 98	28.1	246.9	112.8	96.1	334.8	25.5
Job vacancies	'000	May 98	20.5	-12.7	4.4	73.3	-3.0	26.0
Average weekly employee earnings—full-time adult ordinary time earnings (seasonally adjusted)	\$	May 98	747.2	0.4	3.4	725.6	0.6	4.3

Source: *Labour Force, Australia, Preliminary* (Cat. no. 6202.0), *Job Vacancies and Overtime, Australia* (Cat. no. 6354.0), *Industrial Disputes, Australia* (Cat. no. 6321.0), *Average Weekly Earnings, States and Australia* (Cat. no. 6302.0)

3

LABOUR, NSW

Period	Seasonally adjusted						Job vacancies
	Employed persons	Unemployed persons	Labour force	Participation rate	Unemployment rate	Industrial disputes (working days lost)	
	'000	'000	'000	%	%	'000	
1997							
May	2 803.3	250.6	3 054.0	62.0	8.2	13.2	19.6
June	2 790.4	232.6	3 023.0	61.3	7.7	10.8	..
July	2 805.7	255.4	3 061.1	62.0	8.3	18.5	..
August	2 774.4	242.2	3 016.6	61.0	8.0	22.1	19.3
September	2 815.2	240.2	3 055.5	61.7	7.9	23.0	..
October	2 787.7	244.1	3 031.7	61.2	8.1	28.0	..
November	2 831.9	238.7	3 070.6	61.9	7.8	8.1	22.8
December	2 836.6	228.0	3 064.7	61.7	7.4	4.8	..
1998							
January	2 843.3	227.1	3 070.4	61.8	7.4	3.3	..
February	2 805.4	234.5	3 039.9	61.1	7.7	9.3	23.5
March	2 830.3	230.7	3 061.0	61.5	7.5	19.7	..
April	2 850.4	220.5	3 070.9	61.6	7.2	8.1	..
May	2 835.4	231.9	3 067.3	61.5	7.6	28.1	20.5
June	2 864.6	234.3	3 098.9	62.1	7.6	n.y.a.	..
July	2 886.7	232.9	3 119.6	62.4	7.5	n.y.a.	..

Source: *Labour Force, Australia, Preliminary* (Cat. no. 6202.0), *Industrial Disputes, Australia* (Cat. no. 6321.0)

Month	Employed		Unemployed		Labour force	Not in labour force	Civilian population aged 15 years and over	Unemployment rate(a)	Participation rate(b)
	Full-time workers	Total	Looking for full-time work	Total					
	'000	'000	'000	'000	'000	'000	'000	%	%
MALES									
July									
1994	1 367.3	1 528.8	142.4	155.2	1 684.0	647.0	2 331.0	9.2	72.7
1995	1 430.7	1 582.0	117.3	131.0	1 713.0	646.4	2 359.4	7.6	72.6
1996	1 421.9	1 595.4	115.8	132.8	1 728.2	664.4	2 392.5	7.7	72.2
1997									
May	1 408.0	1 597.3	127.6	143.3	1 740.7	677.4	2 418.1	8.2	72.0
June	1 416.4	1 598.9	116.8	129.1	1 728.1	692.7	2 420.7	7.5	71.4
July	1 422.3	1 600.4	130.3	145.4	1 745.8	677.8	2 423.6	8.3	72.0
August	1 390.3	1 567.6	120.3	135.2	1 702.8	723.7	2 426.5	7.9	70.2
September	1 434.3	1 613.3	126.1	147.6	1 760.9	668.5	2 429.3	8.4	72.5
October	1 428.1	1 595.3	121.3	138.9	1 734.2	698.1	2 432.3	8.0	71.3
November	1 431.3	1 615.2	119.0	138.1	1 753.3	681.9	2 435.2	7.9	72.0
December	1 456.8	1 637.6	116.8	135.1	1 772.7	665.4	2 438.1	7.6	72.7
1998									
January	1 441.8	1 616.3	127.1	141.7	1 758.0	682.3	2 440.3	8.1	72.0
February	1 431.8	1 599.2	129.3	150.7	1 749.9	692.5	2 442.4	8.6	71.6
March	1 432.2	1 613.1	123.5	140.6	1 753.7	690.9	2 444.6	8.0	71.7
April	1 441.4	1 622.7	104.7	122.9	1 745.6	701.8	2 447.3	7.0	71.3
May	1 434.0	1 614.6	115.7	133.2	1 747.8	702.3	2 450.1	7.6	71.3
June	1 443.0	1 623.9	117.7	134.6	1 758.5	694.4	2 452.9	7.7	71.7
July	1 463.8	1 639.4	115.6	128.2	1 767.6	687.9	2 455.5	7.3	72.0
FEMALES									
July									
1994	696.4	1 137.6	81.1	111.5	1 249.1	1 166.7	2 415.8	8.9	51.7
1995	714.0	1 188.4	59.1	80.2	1 268.6	1 173.9	2 442.5	6.3	51.9
1996	731.5	1 205.3	62.5	90.9	1 296.2	1 182.1	2 478.3	7.0	52.3
1997									
May	720.4	1 206.6	67.2	101.9	1 308.5	1 199.5	2 508.0	7.8	52.2
June	704.3	1 192.4	64.1	92.3	1 284.7	1 226.0	2 510.7	7.2	51.2
July	729.6	1 213.2	61.7	92.7	1 305.9	1 207.7	2 513.6	7.1	52.0
August	703.9	1 182.9	65.3	92.7	1 275.6	1 240.8	2 516.5	7.3	50.7
September	722.2	1 226.8	63.4	96.1	1 322.9	1 196.5	2 519.4	7.3	52.5
October	721.0	1 194.1	68.1	97.3	1 291.5	1 230.6	2 522.1	7.5	51.2
November	725.5	1 228.3	62.1	87.8	1 316.1	1 208.6	2 524.7	6.7	52.1
December	730.8	1 234.9	66.3	95.7	1 330.6	1 196.8	2 527.4	7.2	52.6
1998									
January	721.4	1 185.5	71.4	102.6	1 288.1	1 241.2	2 529.3	8.0	50.9
February	707.1	1 189.9	72.1	111.7	1 301.7	1 229.5	2 531.1	8.6	51.4
March	715.8	1 217.8	73.7	105.3	1 323.1	1 209.9	2 533.0	8.0	52.2
April	720.0	1 226.2	63.2	96.2	1 322.4	1 212.9	2 535.3	7.3	52.2
May	707.9	1 220.7	68.5	94.0	1 314.7	1 222.9	2 537.7	7.1	51.8
June	727.3	1 242.0	57.2	88.3	1 330.4	1 209.6	2 540.0	6.6	52.4
July	762.9	1 255.2	59.9	88.7	1 344.0	1 198.3	2 542.3	6.6	52.9

For footnotes see end of table.

4

LABOUR FORCE STATUS, NSW—ORIGINAL *continued*

Month	Employed		Unemployed		Labour force	Not in labour force	Civilian population aged 15 years and over	Unemployment rate(a)	Participation rate(b)
	Full-time workers	Total	Looking for full-time work	Total					
	'000	'000	'000	'000	'000	'000	'000	%	%
PERSONS									
July									
1994	2 063.7	2 666.4	223.5	266.7	2 933.1	1 813.7	4 746.8	9.1	61.8
1995	2 144.7	2 770.4	176.4	211.1	2 981.5	1 820.3	4 801.8	7.1	62.1
1996	2 153.4	2 800.7	178.4	223.7	3 024.4	1 846.5	4 870.9	7.4	62.1
1997									
May	2 128.4	2 804.0	194.9	245.3	3 049.2	1 876.9	4 926.1	8.0	61.9
June	2 120.8	2 791.3	181.0	221.4	3 012.8	1 918.7	4 931.4	7.3	61.1
July	2 151.9	2 813.6	192.1	238.1	3 051.7	1 885.5	4 937.2	7.8	61.8
August	2 094.3	2 750.5	185.6	228.0	2 978.4	1 964.5	4 942.9	7.7	60.3
September	2 156.5	2 840.0	189.5	243.7	3 083.8	1 865.0	4 948.7	7.9	62.3
October	2 149.1	2 789.4	189.3	236.2	3 025.7	1 928.7	4 954.3	7.8	61.1
November	2 156.7	2 843.5	181.1	225.9	3 069.4	1 890.5	4 959.9	7.4	61.9
December	2 187.6	2 872.6	183.1	230.8	3 103.3	1 862.2	4 965.6	7.4	62.5
1998									
January	2 163.2	2 801.8	198.5	244.3	3 046.1	1 923.5	4 969.5	8.0	61.3
February	2 138.9	2 789.1	201.4	262.4	3 051.5	1 922.0	4 973.5	8.6	61.4
March	2 148.0	2 830.9	197.1	245.8	3 076.8	1 900.8	4 977.5	8.0	61.8
April	2 161.5	2 848.9	167.9	219.1	3 068.0	1 914.7	4 982.7	7.1	61.6
May	2 141.9	2 835.3	184.2	227.2	3 062.5	1 925.2	4 987.8	7.4	61.4
June	2 170.3	2 865.9	174.9	223.0	3 088.8	1 904.1	4 992.9	7.2	61.9
July	2 226.8	2 894.6	175.5	216.9	3 111.6	1 886.2	4 997.7	7.0	63.3

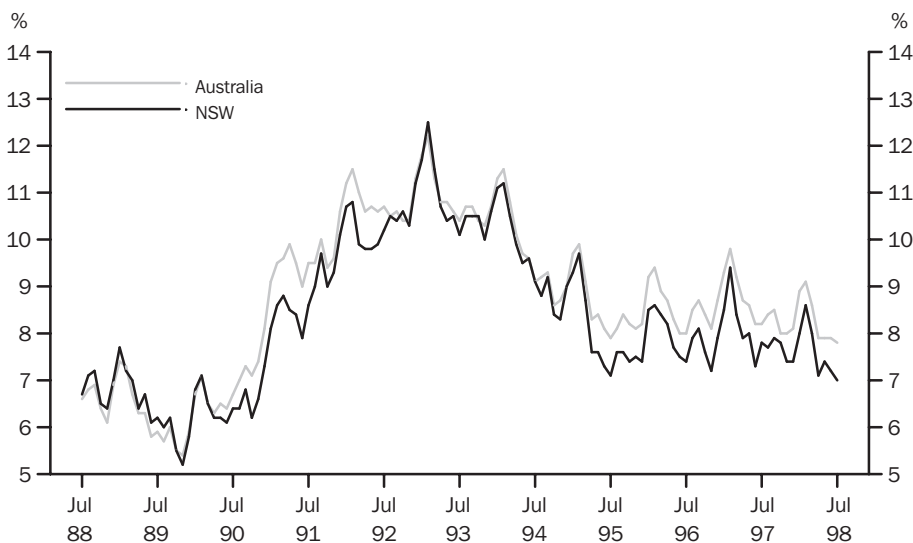
^a The number of unemployed in each group expressed as a percentage of the labour force in the same group.

^b The labour force in each group expressed as a percentage of the civilian population aged 15 and over in the same group.

Source: Labour Force, Australia, Preliminary (Cat. no. 6202.0)

5

UNEMPLOYMENT RATE—ORIGINAL



Source: Labour Force, Australia, Preliminary (Cat. no. 6202.0).

6

COAL, ELECTRICITY AND GAS PRODUCTION, NSW AND AUSTRALIA—ORIGINAL

Indicator	Unit	Latest period	New South Wales				Australia		
			Latest figure	Change from prior period		Latest figure	Change from prior period		Change from same period prior year
				%	%		%	%	
Raw coal won—									
Underground	'000 tonnes	May 98	4 621	–10.2	–10.8	5 886	–2.1		–6.5
Open cut	'000 tonnes	May 98	5 800	–17.3	–12.5	14 161	–2.6		–7.0
Total	'000 tonnes	May 98	10 421	–14.3	–11.8	20 048	–2.5		–6.8
Electricity	mill. kWh	Mar qtr 98	14 390	–5.5	–4.9	42 669	–1.2		4.0
Gas(a)	teraJ	Jun qtr 98	29 614	31.5	–1.0	174 491	23.7		1.9

^a Available for issue through mains. Includes ACT.

Source: Joint Coal Board, Manufacturing Production, Australia (Cat. no. 8301.0)

7

COAL, ELECTRICITY AND GAS PRODUCTION, NSW—ORIGINAL

Period	Raw coal won			Electricity mill. kWh	Gas(a) teraJ
	Underground	Open cut	Total		
	'000 tonnes	'000 tonnes	'000 tonnes		
1995–96	54 314	58 775	113 089	62 047	104 141
1996–97	54 643	69 037	123 680	62 788	109 284
1997–98	n.y.a.	n.y.a.	n.y.a.	n.y.a.	111 665
1997					
April	4 804	6 625	11 429	15 973	29 907
May	5 183	6 626	11 809		
June	4 717	5 785	10 502		
July	6 491	7 085	13 576	16 632	34 086
August	5 124	6 112	11 236		
September	4 911	5 792	10 703		
October	4 498	6 716	11 214	15 220	25 445
November	4 252	6 084	10 336		
December	4 090	5 997	10 087		
1998					
January	5 361	6 322	11 683	14 390	22 521
February	4 560	5 748	10 308		
March	4 326	5 515	9 841		
April	5 146	7 016	12 162	n.y.a.	29 614
May	4 621	5 800	10 421		
June	n.y.a.	n.y.a.	n.y.a.		

^a Available for issue through mains. Includes ACT.

Source: Joint Coal Board, Manufacturing Production, Australia (Cat. no. 8301.0)

Indicator	Unit	Latest period	Latest figure	New South Wales		Latest figure	Australia	
				Change from prior period	Change from same period prior year		Change from prior period	Change from same period prior year
				%	%		%	%
Number of dwelling units(a) (seasonally adjusted)—								
New houses	No.	Jun 98	2 529	4.5	19.3	9 459	2.3	19.8
Total	No.	Jun 98	5 357	29.8	25.3	14 321	8.0	22.7
Value of new residential building (seasonally adjusted)	\$m	Jun 98	588.9	27.0	27.8	1 533.0	9.8	26.4
Value of alterations and additions to residential building(b) (seasonally adjusted)	\$m	Jun 98	139.1	7.5	9.3	297.4	5.9	7.8
Value of non-residential building(c) (original)	\$m	Jun 98	523.1	-18.4	48.2	1 214.7	-17.8	14.7
Value of all building (original)	\$m	Jun 98	1 214.8	-9.0	34.5	3 021.8	-8.1	21.9

^a Includes dwelling units approved as part of the construction of non-residential building and alterations and additions to existing buildings (including conversions to dwelling units).

^b Valued at \$10,000 or more. Includes conversions of existing buildings into residential buildings.

^c Valued at \$50,000 or more.

Source: Building Approvals, Australia (Cat. no. 8731.0)

Period	Number of dwelling units(a), seasonally adjusted				Value of building approvals			
	New houses		Total		Seasonally adjusted		Original	
					Alterations and additions to residential building(b)			
	Private sector	Total	Private sector	Total	New residential building	Non-residential building(c)	All building	
	no.	no.	no.	no.	\$m	\$m	\$m	\$m
1995-96	3 650.3	9 168.6
1996-97	5 169.2	11 356.6
1997-98	5 894.7	13 287.2
1997								
April	2 164	2 187	4 067	4 199	464.8	90.8	307.3	847.3
May	3 059	3 076	4 504	4 558	491.5	90.7	260.5	971.3
June	2 111	2 120	4 118	4 277	460.7	127.3	353.0	903.0
July	2 122	2 134	3 621	3 700	427.2	95.3	584.9	1 156.7
August	2 198	2 203	4 622	4 742	614.2	99.5	710.5	1 405.9
September	2 181	2 186	3 844	3 961	430.3	93.8	396.4	958.0
October	2 424	2 434	4 045	4 077	479.4	108.9	520.3	1 123.1
November	2 399	2 411	4 424	4 470	503.1	103.5	380.6	1 028.0
December	2 545	2 563	4 476	4 620	529.0	119.0	286.0	885.8
1998								
January	2 621	2 648	4 395	4 506	450.2	144.0	477.0	984.0
February	2 451	2 482	3 635	3 767	413.4	122.5	461.8	943.8
March	2 574	2 592	4 496	4 633	522.9	112.7	386.4	988.9
April	2 578	2 585	4 909	5 025	577.0	160.4	527.0	1 263.2
May	2 405	2 419	4 050	4 127	463.7	129.4	640.7	1 335.0
June	2 483	2 529	5 256	5 357	588.9	139.1	523.1	1 214.8

^a Includes dwelling units approved as part of the construction of non-residential building and alterations and additions to existing buildings (including conversions to dwelling units).

^b Valued at \$10,000 or more. Includes conversions of existing buildings into residential buildings.

^c Valued at \$50,000 or more.

Source: Building Approvals, Australia (Cat. no. 8731.0)

Indicator	Latest period	New South Wales			Australia		
		Latest figure	Change from prior period	Change from same period prior year	Latest figure	Change from prior period	Change from same period prior year
		\$m	%	%	\$m	%	%
Food retailing	June 98	1 532.8	1.5	4.7	4 643.9	0.2	5.3
Department stores	June 98	312.0	-11.9	-0.7	920.7	-7.6	2.2
Clothing and soft good retailing	June 98	267.4	-9.4	-2.7	739.3	-4.8	8.4
Household good retailing	June 98	425.2	-0.6	-6.7	1 243.5	-0.8	-3.2
Recreational good retailing	June 98	226.2	4.4	1.1	639.2	3.4	2.9
Other retailing	June 98	406.8	-0.1	4.6	1 184.9	1.7	6.5
Hospitality and services	June 98	776.2	0.3	1.4	1 917.7	-1.2	3.1
Total value of retail sales	June 98	3 946.5	-1.0	1.5	11 289.1	-0.8	3.8

^a The figures shown are derived from a monthly survey of retail establishments. Excludes motor vehicle, boat and caravan dealers, service stations, smash repairers, tyre and battery retailers, bread and milk vendors, footwear repairers and electrical appliance repairers n.e.c. Retail establishments which do not have employees are excluded from the survey. Turnover includes retail sales, wholesale sales, takings from repairs, meals and hiring of goods; and commissions from agency activity (e.g. commissions received from collecting dry cleaning, selling lottery tickets etc.)

Source: Retail Trade, Australia (Cat. no. 8501.0).

Period	Food retailing	Department stores	Clothing and soft good retailing	Household good retailing	Recreational good retailing	Other retailing	Hospitality and services	Total
	\$m	\$m	\$m	\$m	\$m	\$m	\$m	\$m
1997								
April	1 455.1	314.7	271.6	440.6	219.6	378.3	727.8	3 807.8
May	1 481.5	327.9	283.2	452.9	221.2	384.7	741.0	3 892.4
June	1 464.5	314.2	274.8	455.6	223.7	389.0	765.4	3 887.2
July	1 512.0	364.5	279.8	446.9	214.0	400.5	748.2	3 965.9
August	1 505.2	328.1	276.4	438.9	211.6	385.2	764.2	3 909.6
September	1 537.5	358.4	275.1	427.1	229.9	374.6	765.4	3 967.9
October	1 517.4	336.8	272.8	415.0	225.2	398.1	760.6	3 926.0
November	1 526.7	347.2	280.8	399.3	216.2	410.3	767.4	3 947.9
December	1 539.2	337.0	284.4	413.7	232.8	406.2	770.8	3 984.2
1998								
January	1 568.6	366.8	267.6	444.7	238.7	396.2	761.0	4 043.4
February	1 560.5	325.7	265.1	434.7	224.0	405.0	758.9	3 973.9
March	1 550.9	336.5	259.6	452.7	220.0	394.1	755.7	3 969.6
April	1 506.0	360.1	266.5	436.3	229.3	405.6	754.0	3 957.8
May	1 510.5	354.3	295.3	427.7	216.6	407.2	773.6	3 985.2
June	1 532.8	312.0	267.4	425.2	226.2	406.8	776.2	3 946.5

^a The figures shown are derived from a monthly survey of retail establishments. Excludes motor vehicle, boat and caravan dealers, service stations, smash repairers, tyre and battery retailers, bread and milk vendors, footwear repairers and electrical appliance repairers n.e.c. Retail establishments which do not have employees are excluded from the survey. Turnover includes retail sales, wholesale sales, takings from repairs, meals and hiring of goods; and commissions from agency activity (e.g. commissions received from collecting dry cleaning, selling lottery tickets etc.)

Source: Retail Trade, Australia (Cat. no. 8501.0).

12

NEW MOTOR VEHICLE REGISTRATIONS(a), NSW AND AUSTRALIA—SEASONALLY ADJUSTED

Indicator	Latest period	New South Wales			Australia		
		Latest figure	Change from prior period	Change from same period prior year	Latest figure	Change from prior period	Change from same period prior year
		no.	%	%	no.	%	%
Passenger vehicles	June 98	20 817	11.7	15.8	64 081	17.9	27.9
Other vehicles (excluding motor cycles)	June 98	3 203	-2.4	17.4	11 082	11.5	18.9
Total registrations (excluding motor cycles)	June 98	24 020	9.6	16.0	75 163	16.9	26.5

^a Includes vehicles (other than those of the defence forces) owned by Government departments and authorities. Excludes mobile plant and equipment, tractors, trailers and non-motorised caravans.

Source: New Motor Vehicle Registrations, Australia, Preliminary (Cat. no. 9301.0).

13

NEW MOTOR VEHICLE REGISTRATIONS(a), NSW—SEASONALLY ADJUSTED

Period	Passenger vehicles	Other vehicles (excluding motor cycles)	Total (excluding motor cycles)
	no.	no.	no.
1997			
April	17 194	2 637	19 831
May	16 924	2 770	19 694
June	17 978	2 728	20 706
July	17 377	2 763	20 141
August	16 977	2 732	19 709
September	18 454	2 711	21 165
October	18 920	2 729	21 650
November	18 995	2 513	21 507
December	18 315	3 020	21 335
1998			
January	19 116	2 967	22 083
February	18 501	3 259	21 760
March	17 747	2 978	20 725
April	19 342	3 450	22 791
May	18 640	3 282	21 923
June	20 817	3 203	24 020

^a Includes vehicles (other than those of the defence forces) owned by Government departments and authorities. Excludes mobile plant and equipment, tractors, trailers and non-motorised caravans.

Source: New Motor Vehicle Registrations, Australia, Preliminary (Cat. no. 9301.0).

14

ACCOMMODATION ESTABLISHMENTS(a) NSW AND AUSTRALIA—ORIGINAL

Indicator	Unit	Latest period	Latest figure	New South Wales		Latest figure	Australia	
				Change from prior period	Change from same period prior year		Change from prior period	Change from same period prior year
				%	%		%	%
Room nights	'000	March Qtr 98	3 017.3	-2.1	-0.4	9 056.0	-4.1	0.8
Room occupancy rate	%	March Qtr 98	59.8	-1.6	-4.8	58.0	-3.0	-3.8
Takings	\$'000	March Qtr 98	343 248	-0.1	2.6	955 499	-3.2	2.7

^a Licensed hotels with facilities, motels and guest houses and serviced apartments with 15 or more rooms or units.

Source: Tourist Accommodation, Australia (Cat. no. 8635.0)

15

ACCOMMODATION ESTABLISHMENTS(a) SYDNEY AND NSW—ORIGINAL

Period	Sydney Tourism Region(b)			New South Wales		
	Room nights	Room occupancy rate	Takings	Room nights	Room occupancy rate	Takings
	'000	%	\$'000	'000	%	\$'000
1996						
December qtr(c)	n.a.	n.a.	n.a.	n.a.	n.a.	n.a.
1997						
March qtr	1 680.2	79.1	230 849	3 030.9	62.8	334 524
June qtr	1 515.1	70.5	209 163	2 810.3	57.5	303 313
September qtr	1 555.0	69.6	209 484	2 964.9	59.0	322 065
December qtr	1 653.5	73.0	235 244	3 081.0	60.8	343 650
1998						
March qtr	1 664.9	71.9	235 516	3 017.3	59.8	343 248

^a Licensed hotels with facilities, motels and guest houses and serviced apartments with 15 or more rooms or units.

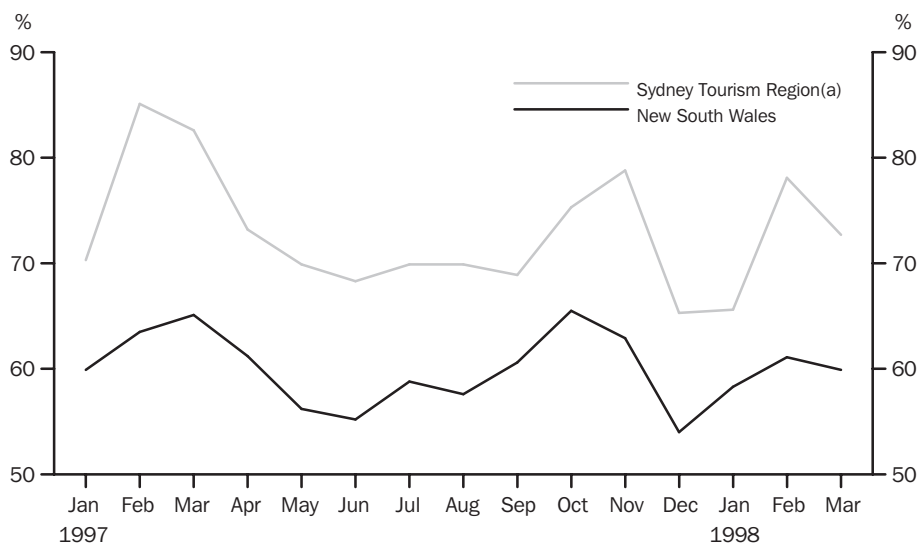
^b Excludes Gosford, Wyong and Blue Mountains Statistical Local Areas.

^c Refer to "Changes to this issue" in the Notes section, page 2 of the August 1998 edition of this publication.

Source: Tourist Accommodation, Small Area Data, NSW (Prod. no. 8635.1.40.001)

16

ACCOMMODATION ESTABLISHMENTS MONTHLY ROOM OCCUPANCY RATE—ORIGINAL



(a) Excludes Gosford, Wyong and Blue Mountains Statistical Local Areas.

Source: Tourist Accommodation, Small Area Data, NSW (Prod. no. 8635.1.40.001)

17

CONSUMER AND PRODUCER PRICE INDEXES, NSW AND AUSTRALIA

Indicator	Unit	Latest period	Latest figure	New South Wales		Latest figure	Australia(a)	
				Change from prior period	Change from same period prior year		Change from prior period	Change from same period prior year
				%	%		%	%
Consumer Price Index (all groups)	1989-90 =100.0	Jun qtr 98	121.4	0.6	1.0	121.0	0.6	0.7
Price index of materials used in house building (all groups)	1989-90 =100.0	Jun qtr 98	120.7	-0.1	2.9	119.0	0.3	1.7
Price index of materials used in building other than house building (all groups)	1989-90 =100.0	Jun qtr 98	114.8	0.3	0.8	114.5	0.4	0.5

^a For the Consumer Price Index this is the weighted average of eight capital cities and for the other two indexes, the weighted average of the six State capital cities.

Source: Consumer Price Index (Cat. no. 6401.0), Price Index of Materials Used in Building Other Than House Building, Six State Capital Cities (Cat. no. 6407.0), Price Index of Materials Used in House Building, Six State Capital Cities (Cat. no. 6408.0)

18

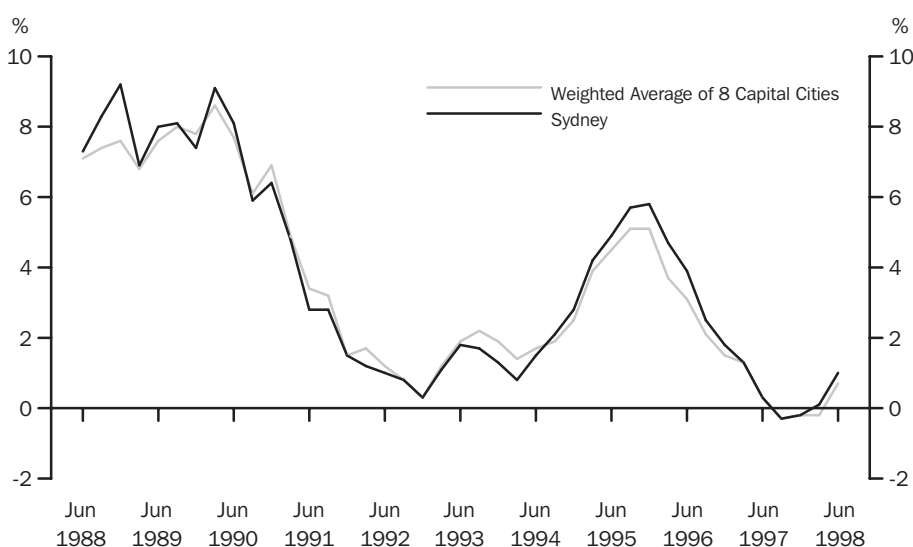
CONSUMER AND PRODUCER PRICE INDEXES, NSW

Period	Consumer Price Index, all groups	Price Index of materials used in house building, all groups	Price Index of materials used in building other than house building, all groups
	1989-90 = 100.0	1989-90 = 100.0	1989-90 = 100.0
1997			
March qtr	120.6	116.0	113.2
June qtr	120.2	117.3	113.9
September qtr	119.8	117.8	114.2
December qtr	120.1	119.4	114.2
1998			
March qtr	120.7	120.8	114.4
June qtr	121.4	120.7	114.8

Source: Consumer Price Index (Cat. no. 6401.0), Price index of Materials Used in Building Other Than House Building, Six State Capital Cities (Cat. no. 6407.0), Price Index of Materials Used in House Building, Six State Capital Cities (Cat. no. 6408.0).

19

CONSUMER PRICE INDEX, ANNUAL RATE OF CHANGE



Source: Consumer Price Index (Cat. no. 6401.0)

Indicator	Latest period	New South Wales			Australia		
		Latest figure \$m	Change from prior period %	Change from same period prior year %	Latest figure \$m	Change from prior period %	Change from same period prior year %
Lending commitments for the construction or purchase of dwellings—							
Construction of dwellings	Jun 98	262	21.3	35.8	832	16.4	37.3
Purchase of newly erected dwellings	Jun 98	114	23.7	-5.0	255	13.3	1.2
Purchase of established dwellings(a)	Jun 98	1 354	9.6	17.4	3 158	9.2	20.4
Refinancing of existing dwellings	Jun 98	343	15.1	4.9	889	17.3	0.9
Lending commitments for alterations and additions	Jun 98	102	2.7	13.3	245	8.9	9.9
Total lending commitments to individuals for housing(b)	Jun 98	2 073	11.5	17.5	5 133	11.9	17.7
Total lending commitments to individuals for housing (seasonally adjusted)(b)	Jun 98	1 999	14.1	15.1	4 997	12.8	14.2

^a Excludes refinancing.

^b Excludes alterations and additions.

Note: From this issue all values will be reported in whole millions of dollars.
Source: Housing Finance for Owner Occupation, Australia (Cat. no. 5609.0)

Period	Lending commitments for the construction or purchase of dwellings				Lending commitments for alterations and additions	Total lending commitments to individuals for housing(b)	
	Construction of dwellings \$m	Purchase of newly erected dwellings \$m	Purchase of established dwellings(a) \$m	Refinancing of existing dwellings \$m		Original \$m	Seasonally adjusted \$m
1995-96	1 896	897	10 145	2 381	1 261	15 868	..
1996-97	2 118	1 235	12 564	2 931	1 222	19 979	..
1997-98	2 625	1 276	14 419	4 063	1 174	21 839	..
1997							
April	212	117	1 232	372	109	1 932	1 792
May	221	121	1 282	316	100	1 941	1 779
June	193	121	1 123	327	90	1 764	1 736
July	221	117	1 218	322	93	1 878	1 708
August	214	115	1 155	311	90	1 794	1 824
September	236	116	1 211	322	103	1 885	1 856
October	224	111	1 254	302	110	1 891	1 884
November	201	110	1 198	262	98	1 771	1 805
December	204	112	1 137	247	91	1 700	1 789
1998							
January	169	73	919	238	81	1 398	1 928
February	216	98	1 137	298	105	1 750	1 790
March	239	111	1 285	306	107	1 940	1 716
April	223	106	1 298	273	95	1 899	1 899
May	216	93	1 235	298	99	1 860	1 752
June	262	114	1 354	343	102	2 073	1 999

^a Excludes refinancing.

^b Excludes alterations and additions.

Note: From this issue all values will be reported in whole millions of dollars.
Source: Housing Finance for Owner Occupation, Australia (Cat. no. 5609.0)

<i>Item</i>	<i>Actual 1995-96</i>	<i>Actual 1996-97</i>	<i>Estimates 1997-98</i>	<i>Actual 1997-98</i>
	<i>\$m</i>	<i>\$m</i>	<i>\$m</i>	<i>\$m</i>
RECEIPTS				
Current receipts				
Taxes, fees and fines				
Stamp duties	2 630	3 193	3 373	3 700
Payroll tax	2 876	3 153	3 338	3 393
Land tax	575	641	786	862
Motor vehicle tax	937	904	930	948
Gaming and betting	1 179	1 209	1 392	1 338
Licences	1 729	1 754	1 979	145
Commonwealth Safety Net Taxes	—	—	—	1 662
Other	943	1 086	1 114	918
Land transactions and royalties	246	243	238	244
Income from Non Budget Sector Enterprises	1 290	1 481	1 341	1 500
Commonwealth General Purpose Recurrent Grants	4 517	4 673	4 900	4 808
less—State Fiscal Contribution	—	210	216	217
Commonwealth Specific Purpose Recurrent Grants	2 757	3 025	2 962	3 039
Other	729	566	626	559
<i>Total current receipts</i>	<i>20 408</i>	<i>21 718</i>	<i>22 763</i>	<i>22 899</i>
Capital receipts				
Commonwealth General Purpose Capital Grants	—	—	—	—
Commonwealth Specific Purpose Capital Grants	867	832	854	724
Other	11	254	228	226
<i>Total capital receipts</i>	<i>877</i>	<i>1 086</i>	<i>1 081</i>	<i>950</i>
Total current and capital receipts	21 285	22 804	23 844	23 849
EXPENDITURE				
Current expenditure				
Departmental payments				
Services				
Health	5 116	5 394	5 585	5 743
Education(a)	4 641	4 912	5 174	5 032
Law and order(b)	1 247	1 672	1 711	1 762
Community Services	989	1 085	1 155	1 178
Other	3 944	4 116	4 192	4 460
Redundancies	17	27	38	52
Subsidies to Non Budget agencies				
Services	726	1 038	866	896
Redundancies	66	32	63	87
Interest payments	1 683	1 377	1 527	1 497
Superannuation	1 077	1 444	1 451	1 495
Treasurer's advance(c)	—	—	100	—
less—User charges	1 286	1 277	1 347	1 370
<i>Total current expenditure</i>	<i>18 220</i>	<i>19 820</i>	<i>20 516</i>	<i>20 830</i>
Capital expenditure				
Capital works	1 940	2 613	2 665	2 506
Capital grants	1 483	1 001	1 240	1 075
less—Asset sales	160	269	r202	275
<i>Total capital expenditure</i>	<i>3 263</i>	<i>3 345</i>	<i>r3 703</i>	<i>3 305</i>
Total current and capital expenditure	19 669	23 165	r24 219	24 135
SURPLUS OR DEFICIT (–)				
Current account	2 188	1 898	2 246	2 068
Capital account	–2 386	–2 259	r–2 622	–2 355
<i>Total result surplus/deficit</i>	<i>–198</i>	<i>–362</i>	<i>r–376</i>	<i>–287</i>
Add Advances made/repaid (net)	1 812	607	r320	191
<i>Total result surplus/deficit (original budget est. basis)</i>	<i>1 617</i>	<i>245</i>	<i>–56</i>	<i>–96</i>

^a Includes Department of Training and Education Co-ordination, Department of School Education, Office of the Board of Studies and TAFE.

^b Includes Attorney Generals Department, Department of Corrective Services and Police Services.

^c Expenditure from the Treasurer's Advance is included in the relevant current payments figures.

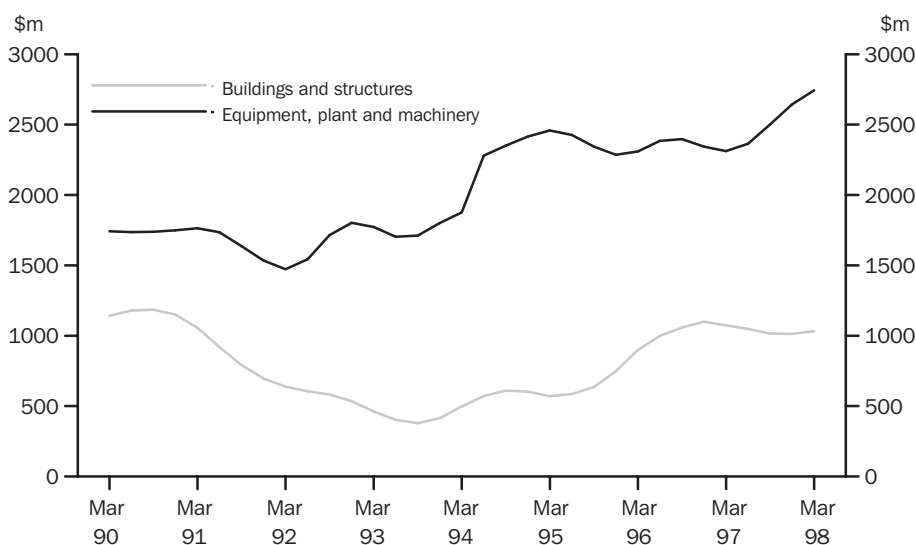
Source: Financial Statement released by NSW Treasury. Figures may differ from data published in annual ABS publications.

Indicator	Latest period	New South Wales			Australia		
		Latest figure	Change from prior period	Change from same period prior year	Latest figure	Change from prior period	Change from same period prior year
		\$m	%	%	\$m	%	%
Type of asset—							
New buildings and structures	Mar qtr	1 033	2.0	−3.7	3 220	0.7	−11.1
Equipment, plant and machinery	Mar qtr	2 744	3.8	18.7	8 504	2.1	15.6
Total	Mar qtr	3 777	3.3	11.6	11 724	1.7	6.8

Source: State Estimates of Private New Capital Expenditure (Cat. no. 5646.0)

Period	Type of asset		
	New buildings and structures	Equipment, plant and machinery	Total
	\$m	\$m	\$m
1996			
December qtr	1 100	2 344	3 444
1997			
March qtr	1 073	2 312	3 385
June qtr	1 048	2 364	3 412
September qtr	1 016	2 501	3 517
December qtr	1 013	2 644	3 657
1998			
March qtr	1 033	2 744	3 777

Source: State Estimates of New Capital Expenditure (Cat. no. 5646.0)



Source: State Estimates of New Capital Expenditure (5646.0)

Indicator	Latest period	New South Wales			Australia		
		Latest figure	Change from prior period	Change from same period prior year	Latest figure	Change from prior period	Change from same period prior year
		\$m	%	%	\$m	%	%
Overseas imports into NSW	Jun 98	3 588	9.8	12.8	8 465	10.6	23.2
Total overseas exports(b)	Jun 98	1 638	-2.6	5.2	7 269	-1.8	12.6
Exports of—							
Meat and meat preparations	Jun 98	77	-5.0	13.9	337	-5.8	24.2
Cereals and cereal preparations	Jun 98	86	-9.7	-57.7	427	13.4	-8.3
Wool and other animal hair	Jun 98	49	-27.3	-19.0	199	-23.3	-25.7
Coke, coal and briquettes	Jun 98	366	5.9	35.5	863	1.3	49.4
Iron and steel	Jun 98	118	0.1	105.2	169	-6.1	49.7
Aluminium	Jun 98	125	15.4	71.9	273	-10.5	27.4
Office machines and parts	Jun 98	42	12.8	4.3	75	0.6	1.5

^a Figures shown are Free On Board (FOB) values.

^b Excludes re-exported goods. State of origin is defined as the State in which the final stage of production or manufacture occurs.

Source: *International Trade, Australia: FASTTRACCS Service (Cat. no. 5466.0).*

Period	Overseas exports of selected commodities(b)								
	Overseas imports into NSW	Total overseas exports(b)	Meat and meat preparations	Cereals and cereal preparations	Wool and other animal hair	Coke, coal and briquettes	Iron and steel	Aluminium	Office machines and parts
	\$m	\$m	\$m	\$m	\$m	\$m	\$m	\$m	\$m
1995-96	34 891	16 684	794	822	720	3 338	1 037	1 111	638
1996-97	34 204	r17 732	784	1 540	859	3 426	968	993	535
1997-98	38 442	19 695	921	1 554	1 061	4 048	1 168	1 226	522
1997									
April	2 939	1 446	76	137	62	286	92	88	31
May	2 788	r1 718	75	197	74	289	112	99	40
June	3 182	r1 557	68	204	61	270	57	73	41
July	3 221	1 761	74	146	104	335	65	97	45
August	3 002	r1 764	71	186	79	318	93	116	44
September	3 217	1 670	76	159	102	r351	59	73	48
October	3 387	r1 694	78	95	120	302	123	98	45
November	3 096	1 761	89	149	130	328	98	102	51
December	3 419	r1 840	88	165	116	r384	89	99	59
1998									
January	2 942	r1 436	65	135	72	r359	115	118	37
February	2 804	1 461	75	115	82	322	87	82	38
March	r3 437	r1 503	82	119	73	301	99	107	38
April	3 064	r1 488	r64	104	66	337	104	100	37
May	3 267	r1 681	r81	96	r67	346	r118	r109	r38
June	3 586	1 638	77	86	49	366	118	125	42

^a Figures shown are Free On Board (FOB) values.

^b Excludes re-exported goods. State of origin is defined as the State in which the final stage of production or manufacture occurs.

Source: *International Trade, Australia: FASTTRACCS Service (Cat. no. 5466.0).*

SELF-HELP ACCESS TO STATISTICS

<i>PHONE</i>	Call 1900 986 400 for the latest statistics on CPI, Labour Force, Earnings, National Accounts, Balance of Payments and other topics. (Call cost is 75c per minute)
<i>INTERNET</i>	http://www.abs.gov.au
<i>LIBRARY</i>	A range of ABS publications is available from public and tertiary libraries Australia wide. Contact your nearest library to determine whether it has the ABS statistics you require.

WHY NOT SUBSCRIBE?

<i>PHONE</i>	+61 1300 366 323
<i>FAX</i>	+61 3 9615 7848

CONTACTING THE ABS

ABS provides a range of services, including: a telephone inquiry service; information consultancy tailored to your needs; survey, sample and questionnaire design; survey evaluation and methodological reviews; and statistical training.

<i>INQUIRIES</i>	<i>By phone</i>	<i>By fax</i>
Canberra	02 6252 6627	02 6253 1404
Sydney	02 9268 4611	02 9268 4668
Melbourne	03 9615 7755	03 9615 7798
Brisbane	07 3222 6351	07 3222 8283
Perth	08 9360 5140	08 9360 5955
Adelaide	08 8237 7400	08 8237 7566
Hobart	03 6222 5800	03 6222 5995
Darwin	08 8943 2111	08 8981 1218

POST Client Services, ABS, PO Box 10, Belconnen, ACT 2616

EMAIL client.services@abs.gov.au



2130710009982

ISSN 1031-8534

RRP \$16.00